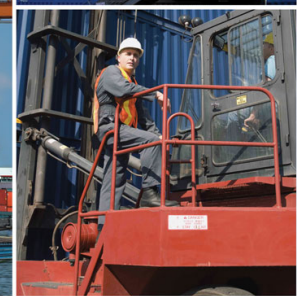
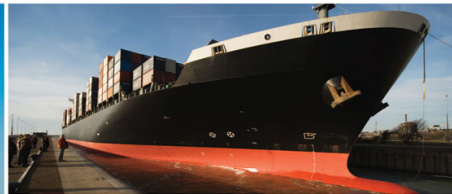


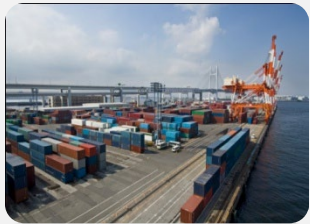
# ESG

Shipping & Logistics S.A.E.



[www.esgshipping.com](http://www.esgshipping.com)

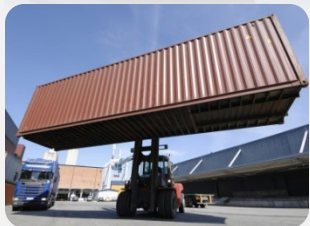
## About Us



**ESG** was established in 1993 by a group of shipping and logistics experts with many years experience in the fields of ship Agency, Suez Canal Transit, Land Transportation, Multimodal Transport and Logistic Services.



**ESG** professional Management and self motivated personals are all working together in perfect harmony to provide principals, vessels operators, exporters and importers the full range of shipping and logistic services.

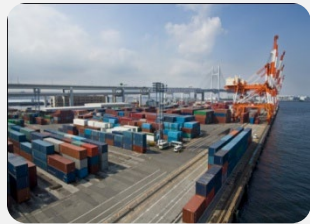


**ESG** expertise in both Shipping & Logistics and our Network of over 85 overseas partners allows us to provide our customers with a full range of logistic services in all Egyptian Ports and Harbors. Our long years experience and good connections with Port & Suez Canal authorities and port officers facilitate our mission and allow us to professionally serve ship & crew with utmost speed and efficiency.

**ESG** is a licensed Suez Canal Transit and ship agent for all type vessels. Our team of full time employed professional supervisors working 24/7 at all Egyptian ports through ESG own offices in Alexandria, Port Said, Damietta and Suez have long years experience in handling all agency and husbandry requirements for our customers.

**ESG** has its own 10000 sqm bounded container Yard, 7 km from Alexandria Port and is a licensed freight forwarder for FCL & LCL shipments and a licensed customs broker, since 1993. We are members of FIATA , IATA , EIFFA , ACS , ABA , AEC and ISO 9001:2008 certified.

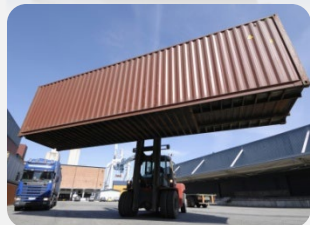
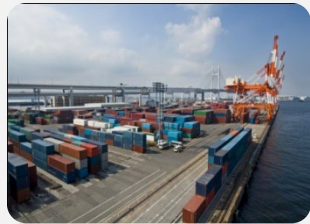
## About Us



**ESG** Group now consists of a group of companies with 8 offices in the middle East region employing more than 500 full time employees working together in perfect harmony to offer our principals, ship owners, ship operators, exporters , importers and overseas partners our integrated shipping and logistics services in all Egyptian Ports and transit services at Suez Canal for all size vessels.

Our Fully owned subsidiary New Oceanic L.L.C. is also a licensed ship agent for all size vessels offering ship owners, exporters and importers our integrated shipping and logistics services in DP world ports in UAE and professionally handling cargo delivery to all GCC destinations.

## Quality Policy



**ESG is ISO 9001:2000 certified;** as we have always regarded Quality as the foundation of success, and this has always been the prevailing culture among our staff and top management.

We have always been committed to quality and this is reflected in our Strategic Management System, which is based on our belief for constant trainings for our staff, providing the best working environment for our staff and customers, constant vigilance and attention of all business aspects, steady feedback from our customers, clear and purposeful approach to health, safety, security and environment and corporate social responsibility.

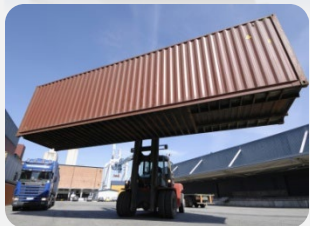
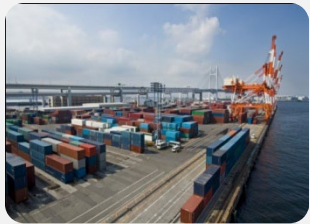
## Mission & Vision

### Our mission, vision and basic philosophy

Our mission is to facilitate trade links worldwide and provide exporters and importers with a totally new concept for shipping and logistics. For us shipping is simply “moving with care”.

We are not the largest shipping company but we have proven to be one of the most efficient and reliable players in the region and with our totally devoted and self motivated team, ESG will surely gain global recognition and firmly position itself among the leading companies worldwide. And to build on the group’s vision, shared values and basic philosophy, we rely on our governing elements that strengthen our efficiency and ability to develop innovative solutions giving us a major competitive advantage. We are determined to lead and take every opportunity to innovate and meet the ever-changing needs of our customers.

We involve, contribute and take responsibility and as one team we are truly dedicated to achieving our vision by working together in perfect harmony to be always at the forefront. Our constant focus on customers’ needs and search for new opportunities drives us forward to developing services, products and solutions. But we never forget the safety and well being of people, society and the environment.



## Shipping Services

### Ship Agency Services

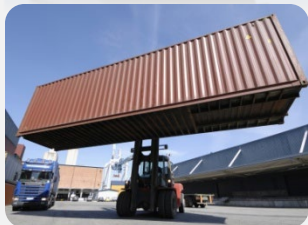
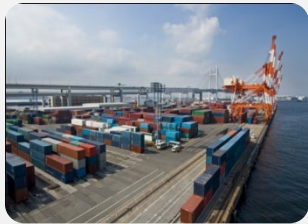
- Handling vessels of all sizes in all Egyptian ports with utmost speed and efficiency.
- Comprehensive disbursement account and cost control of all vessel movement.
- Vessels supply, bunkering and sign in/off of vessel crew.
- NVOCC, cargo canvassing and project cargo handling.

### Suez Canal Transit

- Minimization and accurate estimation of canal tolls.
- Arrival procedures and ETA notice for North bound & South bound Transit.
- On time delivery of port clearance docs to vessels to maintain vessel schedule with no delay.
- Keeping tiers reports at the lowest possible level and report all deviations to principals.

### Husbandry Services

- Crew handling - meet & assist, shore pass arrangements, hotel bookings, prepaid telephone cards, mail, doctors, dentists, ..etc.
- Inward & outward clearance, spares clearance and delivery, Follow-up activities with workshops, contractors etc.
- Bunker fuels and lubricants.



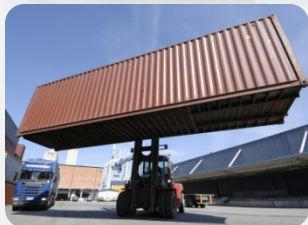
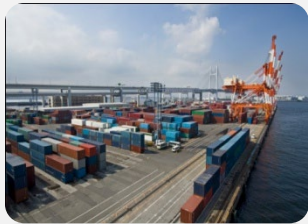
## Logistics Services

### Ship Spares Logistics

- **ESG's** Expertise in both shipping and logistics guarantees efficient supply chain for maintenance spares and equipment.
- Door-to-Deck delivery service for ship spares and marine parts.
- On time and cost effective delivery for spares and equipment.
- Port and off-shore technical support.

### Freight Contracting

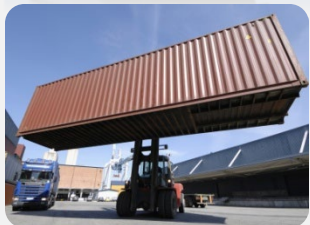
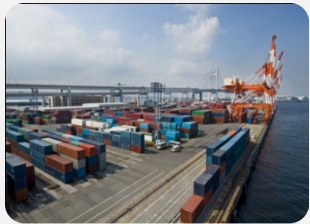
- Integrated service packages including ocean freight, port agency, stevedoring, customs clearance and inland transportation to final destinations.
- Combined ship/shore services such as pre-carriage, cargo surveying and bagging.
- Commercial management of vessels and cargo.
- Provision of super cargoes.
- Ocean freight feasibility studies.



## Logistics Services

### Supply Chain Management

- Global supply chain management and tailor made services for manufacturers and retailers.
- Freight management, Consolidation, warehousing and inventory management for raw materials.
- Production and finished goods testing, sample preparation and quality control.
- Value Added Services: Promotional packaging, labeling, printing and component assembly.
- Cost effective handling, storage, transportation and distribution services.
- Transport management and multimodal transportation for best timing and cost concerns.
- International freight forwarding, import and export control and tracking system.





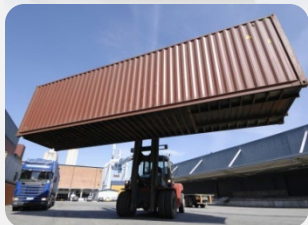
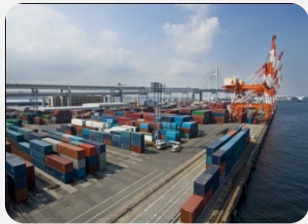
## Projects

### Project Cargo Handling:

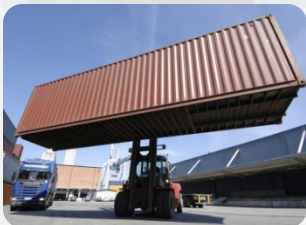
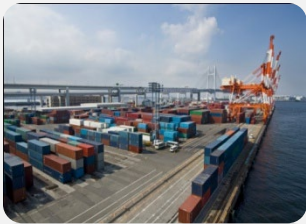
Our local connections and know-how, wide geographical knowledge and trusted partners allows ESG to professionally move heavy and oversize project cargo from origin to destination. ESG 24-hour dedicated transport supervisors and engineers, attend all transport operation stages of heavy and oversized cargoes from time of unloading till final project delivery site to guarantee safe and on time deliveries.

### Our project cargo handling services include:

- Comprehensive logistic solutions by our transportation engineers determining the means and most suitable transportation routes, to overcome any possible obstacles.
- Disassembling and re-assembling of complex components and oversized cargoes.
- Site survey / feasibility studies for tailor made solutions.
- Specialized chartering department arranging for full / part charter parties.
- Multimodal transport services for special equipment, choosing best transport means.



## Hanging Garments



### Hanging Garments

In our role to meet the ever changing needs of our customers and our ability to develop innovative solutions, ESG was able to offer garment exporters our specially equipped containers for exporting suits, jackets, trousers,.. etc. on hangers wrapped in nylon bags and neatly hanged on our locally manufactured MICANO, loading 30% more goods than packed in cartons and shipped in regular containers. ESG's unique hanging garment services and our efficient supply chain management system, made it possible for garment exporters to guarantee on time deliveries to fashion stores, saving time, labor and cost of ironing.

### Advantage of our Hanging Garments services:

- 30% more goods than regular cartons and containers.
- Saving time, labor and cost of ironing.
- All pieces on hangers and covered with nylon bags.
- On time delivery at fashion stores.

## Land Transport

### Inland & Overland Transport services

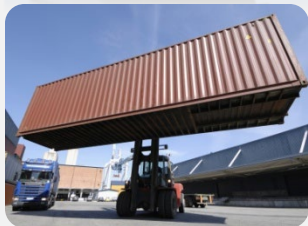
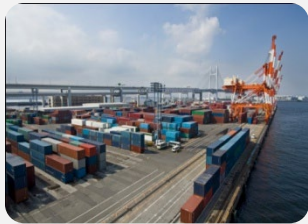
**EMT** our fully owned trucking company was established in 1998 offering a diverse range of inland and overland trucking services for containerized reefer and dry cargoes, liquids, heavy and oversize cargoes; offering our clients reliable and on time deliveries.

**EMT** is also one of the leading companies in Egypt in the field of international overland trucking to Arabian Gulf Countries and Libya for reefer and dry cargoes. We are also specialized in the moving of oversized and overweight shipments and project cargo handling.

**EMT** operates its own state of the art fleet of Mercedes Actros trucks, Thermo King reefer trailers, Pickup trucks and vans.

### Our transport services include:

- 24-hour inland trucking services for dry and reefer cargoes to all local destinations within Egypt.
- International overland trucking services to Libya and Arab Gulf Countries for dry and reefer cargoes.
- Efficient and reliable project cargo handling for all oversized and overweight equipments.
- Instant contact with drivers and transport supervisors to ensue on time deliveries.
- 24-hour supervision for all pick-ups & deliveries.



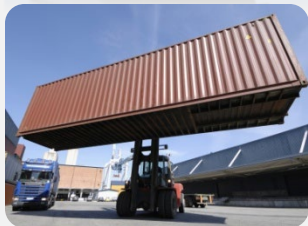
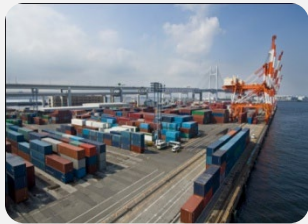
## Customs Clearance

### Customs Clearance Services

**EMS** our fully owned customs clearance company is one of ESG Egypt's subsidiaries employing 15 in-house customs brokers working in all Egyptian ports. Our professional and long years experienced customs brokers have long term relations with customs officials and can swiftly clear maintenance spares and equipment for on-time deliveries . **EMS** also clears goods of all kinds serving a wide range of regular exporters and importers.

### Our Customs Clearance services include:

- 24-hour service for clearing both sea & air export shipments.
- pre-clearance approvals, drawback, temporary import, free zone and transit customs clearance for all import shipments regardless of commodity.
- Accompanying customs delegates by **EMS** customs brokers, and escorting them to factories, farms and other working sites for inspection of goods and finalizing customs formalities ex nominated airport on harbor.



## Reefer Services

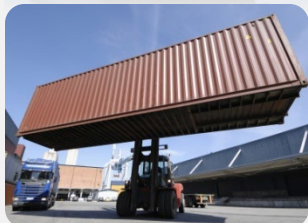
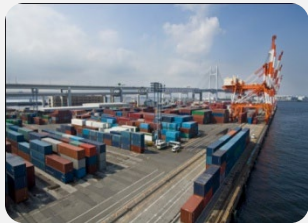
### Perishable Cargo & Agro products

**ESG Egypt** is one of the leading shipping company in Egypt specialized in the field of fresh produce and perishable cargo handling. ESG annually handles more than 11,000 TEU's of HC reefer containers and more than 200,000 tons of citrus, onions, potatoes, ...etc.

**ESG Egypt** also arranges voyage and time charters for ro-ro, ventilated and reefer vessels to Gulf, Black Sea and European ports during the Egyptian Agro season, providing customers with the full chain of shipping and logistic services including all required documentation such as certificate of origin, phyto-sanitary certificates, drawback docs & export fund return. ESG also offers its customers door to door reefer trailer services to Europe, UK and Arab Gulf Countries.

### Our Perishable cargo services include:

- Professional handling of frozen products, fresh vegetables & highly sensitive fruits and firm bookings with shipping lines and air carriers at all times.
- 24/7 presence by our customs brokers and supervisors at all Egyptian sea and airports.
- Employed customs brokers and supervisors escorting customs delegations to farms, pack-houses and loading stations and immediate issuance of EUR1 & phyto-sanitary certificates.
- PTI for reefer containers & gen-sets before transport for on-time delivery at pack-house.
- Door to Door Sea / Land reefer trailer services to Gulf Countries, UK and European destinations.
- Regular voyage and time charters of ro-ro, ventilated and reefer vessels during all seasons.



## Reefer Services

### Sea / Land Reefer Trailers Services

Our constant focus on our customers needs and requirements for short transit time to final destinations, drove ESG to take the initiative in introducing this Sea/ Land reefer trailer service in Egypt allowing exporters to load 6 more pallets than regular high cube reefer container and deliver their fresh produce in one unit till received at final place of delivery.

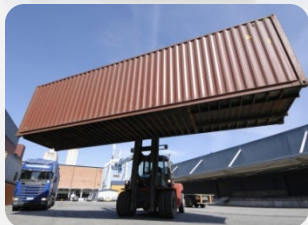
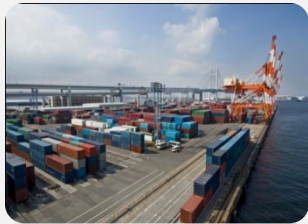
### Our Reefer Trailer Services Include:

#### Reefer Trailer Service (1):

Weekly direct service from pack-house Egypt to final destinations in United Kingdom, The Netherlands and other European destinations. Total transit time of 6 days to NL & 7 days to UK.

#### Reefer Trailer Service (2):

Weekly direct service from pack-house Egypt to Gulf countries. Total transit time 2 days to Jeddah, 6 days to Dammam, 9 days to Kuwait & UAE, 10 days to Qatar & Bahrain.



## Liquid Transport

### ISO Tank Container Services

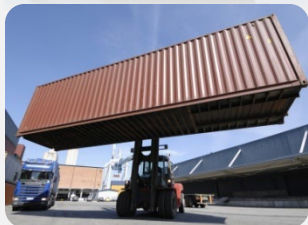
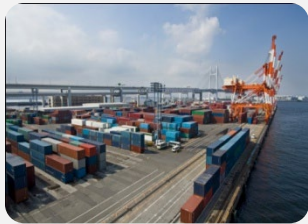
**ESG** is specialized in the carriage of hazardous and non-hazardous bulk liquid shipments in ISO tank containers between Egypt and Middle East, Mediterranean , Europe, USA, Far Eastern Ports.

Our experienced and well trained drivers, transport and operation managers with their comprehensive and long standing knowledge of the transport industry makes them capable of overcoming any transport or distribution problem.

**ESG** strong local presence and our network of specialized and professional overseas partners enable us to provide our customers with the highest quality standards and cost effective solutions for transport of hazardous and non hazardous liquids.

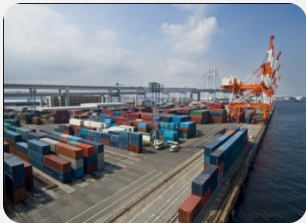
### Our ISO Tank Services Include:

- Haulage services for all load capacities and providing required equipment: Pumps, compressors and in transit generators for liquids, powder blowers,..etc.
- Rapid equipment turnaround with no major product restrictions and highest quality standards and safeguard of all environmental issues.
- Internal and external cleaning using modern cleaning equipment and reference chemical databases to give further information where needed. In addition to chemical and food wash bays, other services include heating facilities by steam, hot water and electricity.



## Liquid Transport

### Flexi-Tank Containers



**ESG** is one of the leading and specialized companies in liquid transport, offering customers flexi-tank containers services for transport of bulk liquids, allowing liquid exporters to load 40% more product than regular drums with a loading capacity from 16000 to 24000 liters; converting a Standard 20 ft dry container into a cost effective bulk liquid container capable of carrying up to 21.5 tons of non-hazardous products.

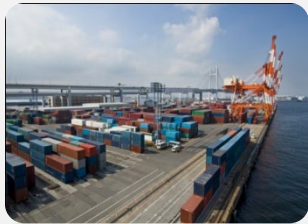
Our network of worldwide offices and partners allows us to offer the complete chain of logistic services from loading site till final place of delivery including loading and discharging operations, supervised by our team of technical specialists, and depending on the product viscosity, available facilities and pump specifications, loading or discharging will take from half an hour to 2 hours reducing fill and discharge time by up to 90% when compared to identical operations using drums.

### Advantage of our flexi-tank container service:

- Loading 40% more than regular drums.
- Reducing fill and discharge time by 90% than regular drums.
- Door to Door services.
- New each load to avoid risk of contamination and maintain product quality.
- Food Grade – meeting FDA, EC standards.
- Environmentally friendly and fully recyclable.



## Container and cargo storage



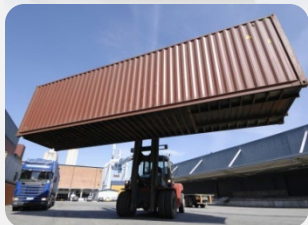
**ESG** warehousing allows us to offer our customers greater speed, efficiency and flexibility for their supply chains.

Our warehouses are able to provide comprehensive pick / pack, de-stuff / palletize, bulk stack and storage services and facilities.



**ESG** will not only transport your goods quickly and safely, but can also distribute your goods to all required destinations with an outstanding level of customer service and tailor-made, flexible solutions Our cargo storage solutions.

In addition to our many operational benefits, will also save you money through reduced inventory and lower container storage and demurrage costs.



### Main Features of our Storage and Warehousing Facilities :

- **Storage yards in Merghem** area of 5000 square meters with stacking capacity of over 700 TEU.
- **Storage yards in Warding** area of 5000 square meters with stacking capacity of over 700 TEU.
- **Storage yard in Abdel-Kader** area of 10000 Square meters with stacking capacity of over 1200 TEU.
- Possibility to connect 50 plugs / yard.
- All yards equipped with modern reach stackers with 30 Tons lifting capacity.



## Contact us

### Head Office:

**45 Sultan Hussien St., from Victor Basile St., Khartoum Square, Bab Shark,  
Alexandria, Egypt.**

**Tel : +20 (3) 4782443**

**Fax : +20 (3) 4782452**

